

CONSTELLATION
CHARTER SCHOOL OF GAINESVILLE

*an initiative of the
Alliance for Public Waldorf Education*

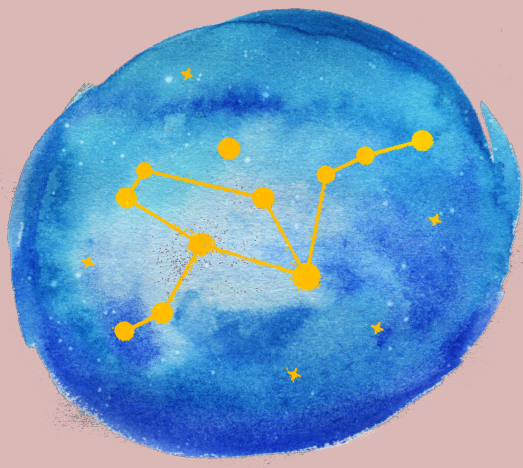
EXECUTIVE SUMMARY

Constellation Charter School of Gainesville's mission is to inspire children's love of learning through academic pursuits, movement, art and nature.

Our school's vision is to provide a whole child educational experience wherein teachers, staff and parents work together to support children as they move forward in their intellectual, emotional and social development from first to eighth grade working out of the Public Waldorf Education Principles. We celebrate the gifts that a diverse community offers and honor the rhythms of human development. Our interdisciplinary curriculum inspires students' critical thinking, emotional intelligence and physical engagement, preparing children to be self-confident, capable individuals with a moral responsibility to act with purpose and compassion in our world.

In Spring 2021, the School Board of Alachua County approved our charter application. We plan to open in August 2022 and need a facility suitable to hold five classrooms and an office.

We would like to propose renting space at United Church of Gainesville for one-five years to house our school.



CONSTELLATION

CHARTER SCHOOL OF GAINESVILLE

*an initiative of the
Alliance for Public Waldorf Education*

RELIABLE TENANT & COMMUNITY PARTNER

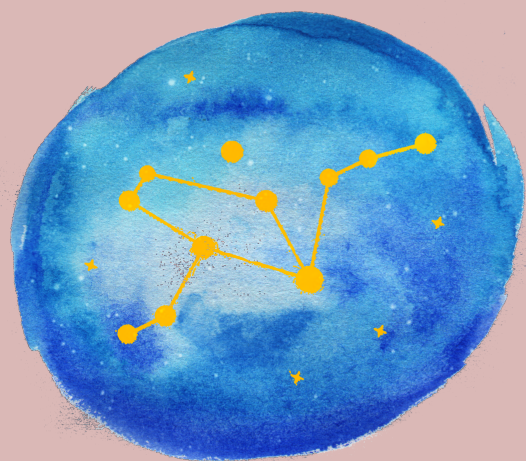
The value of the facility rental and our relationship is multifold, including:

- You will have rent revenue for 1-5 years
- You will have a partner to collaborate with on community events & outreach
- You are able to ensure the classroom facilities meet school district codes for all modern updates in relation to fire, ADA and security compliances
- You will increase your ability to utilize the space for many different purposes after our rental term
- You will have new community members breathing life and energy into your facility, with children's songs and hearts filling the space

During school hours, we propose to rent:

- all four classrooms
- smaller part of gathering hall
- other half of gathering hall at scheduled times
- kitchen & open space to accommodate teachers lounge
- upstairs space for small private meetings as needed
- one small classroom next to Sanctuary

We will make every effort to facilitate a cooperative and effective use of the shared spaces.



CONSTELLATION

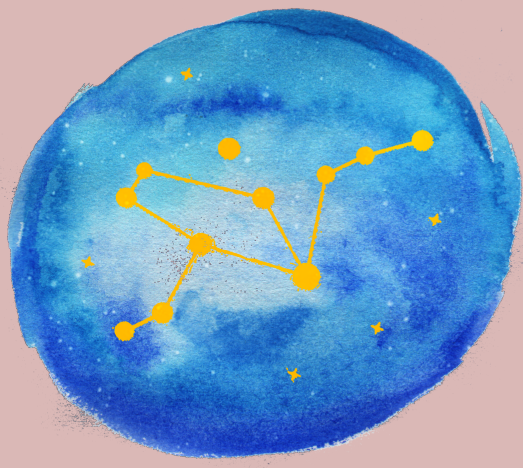
CHARTER SCHOOL OF GAINESVILLE

*an initiative of the
Alliance for Public Waldorf Education*

THE WALDORF-INSPIRED APPROACH

What makes a child a child? What makes a student love learning? How can we, as stewards to our new generations, guide and nurture the innate curiosity and the self-discovery our children will need to explore and embrace in order to become the most fulfilled versions of themselves?

We, along with experts within the field of education, recognize that Waldorf education is instrumental in guiding children on their journey to reaching their full potential in the physical, emotional, academic, artistic and social realms of being. Waldorf schools have a 100-year history of focusing on meeting children in their natural stages of development with a holistic approach of nurturing, respecting and admiring all the possibilities at hand. A motto that resonates across Waldorf schools is "Head, Heart & Hands," which is representative of the Waldorf method encouraging critical thinking, emotional intelligence, and physical engagement. Humans are multifaceted beings, and we believe that education should honor all aspects of our potential with the same emphasis. The Waldorf-inspired approach fosters strong academics built on the integration of music, art and crafts, nature, movement and social intelligence, and views all as equally important fields of study for a balanced development. This pedagogy offers children with various learning styles the opportunity to engage with the material in ways that resonate with them.



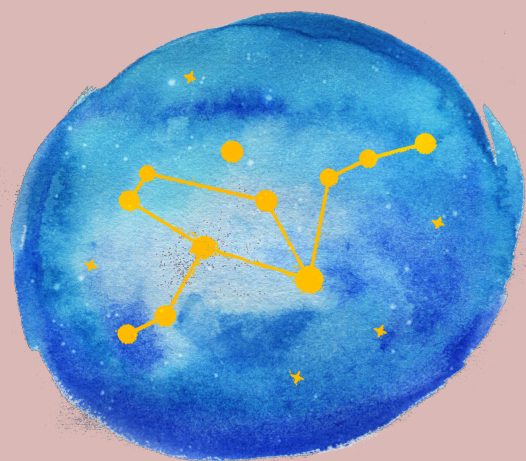
CONSTELLATION
CHARTER SCHOOL OF GAINESVILLE

*an initiative of the
Alliance for Public Waldorf Education*

THE OPPORTUNITY

Waldorf-inspired public schools comprise one of the most rapidly growing educational alternatives in the United States and the world. The educational model and philosophy have been met with such positive response that a need for an organization devoted to Public Waldorf education in the US arose; The Alliance for Public Waldorf Education (APWE). As an initiative of APWE we have access to resources that will help us marry the Waldorf method and curriculum with state-mandated requirements.

We are deeply devoted to preserving the wonder of childhood in all its forms, and wish to ensure that access to a Waldorf-inspired educational experience is equitable. Historically, grade schools offering Waldorf education in Alachua County have been private. The public charter option offers an incredible opportunity to make the Waldorf method accessible to all children and families in our community. We will direct significant energy towards community outreach and education in an effort to have a student population that is representative of our diverse local community. This possibility alone is one of the most exciting aspects of our charter status; to embrace not only those who already value Waldorf education, but anyone who wants to explore this alternative for their children.



CONSTELLATION

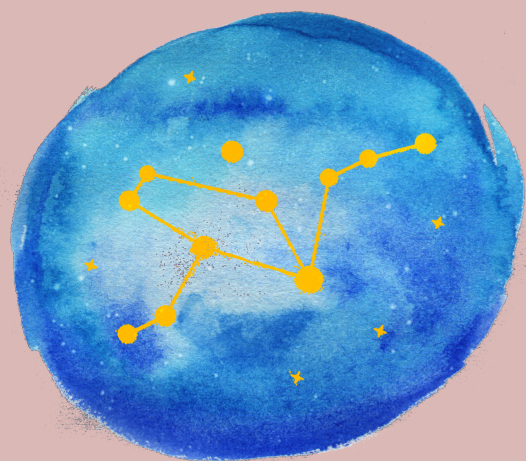
CHARTER SCHOOL OF GAINESVILLE

*an initiative of the
Alliance for Public Waldorf Education*

THE CURRICULUM

Our school is committed to providing our students with an inclusive curriculum representing the global society to which we belong. We believe in preparing today's children for tomorrow's world by instilling the importance of social justice and inclusivity from within the curriculum to the classroom, and beyond. While developing a sense of appreciation for the diversity that arises from individual uniqueness, the sense of community is an important concept in a Waldorf student's school experience. Through regularly shared moments like morning circle time, group song, music ensembles, performances and seasonal gatherings, the Waldorf approach strengthens the school's community sense of belonging. Creative focus for handwork and art classes is inspired by ample time in nature along with synchronous storytelling by the teacher. The Waldorf-inspired teacher becomes a predictable and reliable ally to the children by investing in the students over several years.

Waldorf alumni often voice the same memory of having felt "seen." This approach builds confidence, and from it arise natural leaders that grow up to be capable and compassionate (and passionate) members of our society.



CONSTELLATION

CHARTER SCHOOL OF GAINESVILLE

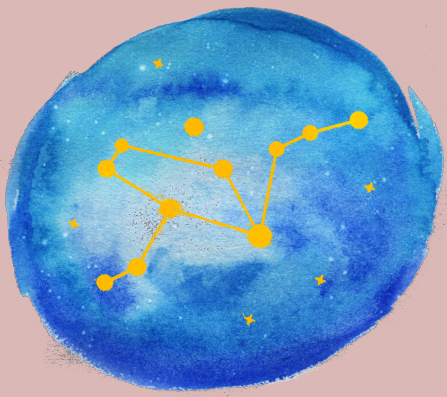
*an initiative of the
Alliance for Public Waldorf Education*

OUR COMMITMENT

Our Board of Directors (BOD) is composed of educators, parents, entrepreneurs, community leaders, healthcare providers, artists, business owners and Waldorf alumni that have all recognized the crucial value of such an education. Most of the members of the BOD have personally experienced the benefits of Waldorf education in a direct or indirect manner, which serves as a powerful driving force for all the members of the initiative, and has resulted in remarkable dedicated efforts towards the opening of this school.

The excitement has reached many helpful hands in town, and the moral and support is buzzing and palpable. As a board, we are confident in our directive and common objective. As parents, educators and proud members of our local community, we are excited for this opportunity.

We hope you will partner with us on our goal to welcome students for the school year of 2022.



CONSTELLATION CHARTER SCHOOL OF GAINESVILLE

an initiative of the
Alliance for Public Waldorf Education

OPENING FALL 2022! WHERE ARE WE NOW?

PLANNING YEAR
2021-2022

MISSION:

TO INSPIRE CHILDREN'S LOVE OF LEARNING
THROUGH ACADEMIC PURSUITS, MOVEMENT,
ART & NATURE.

BOARD OF DIRECTORS

- Will open and operate CCSG and thereafter keep the school on course with its mission through governance and oversight, in a fiscally and legally responsible and sustainable manner.
- Enables the School to be guided pedagogically by established core principles of Public Waldorf Education, which also inform the Board throughout its functioning, ensuring the School remains a force for social renewal.
- Ensures that the Board, its Directors, and Constellation Charter School operates according to the Government in the Sunshine Act, relevant laws, rules and statutes of the State of Florida, and according to its own mission, vision and Bylaws.

THE ALLIANCE FOR PUBLIC WALDORF EDUCATION

- An organization devoted to Public Waldorf education in the US.
- We have access to resources that will help us marry the Waldorf method and curriculum with state-mandated requirements, as well as a job board where we can recruit teachers.

BOARD COMMITTEES

- The role of any committee or council is to support the work of the Board, the Principal, & the school as an evolving entity, keeping the prosperous future of the school a reality & providing recommendations to the Board.
- All committees shall have co-chairs & a Board member shall sit on each committee, not necessarily as the chair of the committee.
- Minutes shall be kept of each meeting of a committee. Committees report monthly progress and actions to the Board.

FUTURE FACULTY COMMITTEE & FAMILIES COUNCIL

- The teachers will create lesson plans and unfold the Waldorf-inspired curriculum in addition to Florida state standards with autonomy, as long as they demonstrate appropriate student achievement.
- The teachers shall strive to work cooperatively with the Principal and with the Board of Directors for the enduring betterment and success of the school.

ADVISORY COUNCIL

- Charged with offering insight and experience on matters relating to Waldorf philosophy, fundraising and operations on an ad hoc basis.
- They will have no official governance role.

FORMING NOW!
SEE PAGE 2!
THERE ARE PLENTY OF
OPPORTUNITIES TO VOLUNTEER IN
MANY DIFFERENT CAPACITIES!